

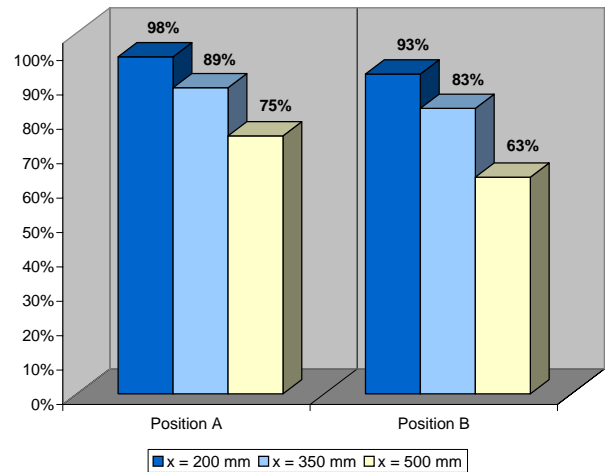
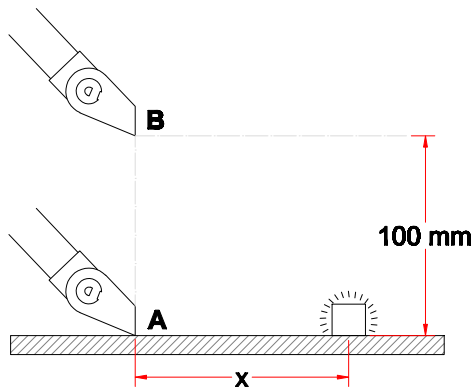


## System 50 - Aluminium (AL)

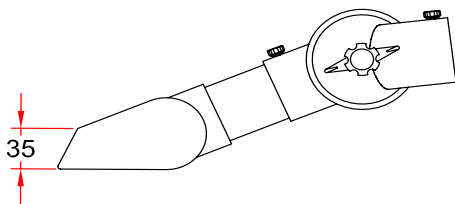
- Suction nozzle recommended for small concentrated sources of pollution
- Width: 200 mm
- Tube and nozzle made of anodized aluminium - surface 10  $\mu$  - and shatterproof chemical resistant polypropylene (PP)
- Internal distribution tube in order to increase the capture efficiency
- Colours available: white (-5) or red (-4)



## Capture efficiency



## Drawing





## System 50 - Aluminium (AL)

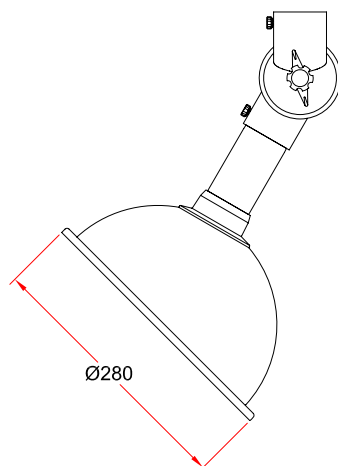
- Round hood recommended for light fumes, gases and small open vessels
- Diameter of hood:  $\varnothing 280$  mm
- Increased stability when moving the hood due to reinforced rim of the hood
- Increased efficiency at an angled position
- Hood made of transparent PETG, resistant to solvents
- Connection tube made of anodized aluminium - surface  $10 \mu$
- The transparent hood assists in keeping a good view of the work place
- Colours of flange available: white (-5), red (-4) or black (-050)



## Capture efficiency

Measurements for this product are comparable with article no. [1-6328](#).

## Drawing



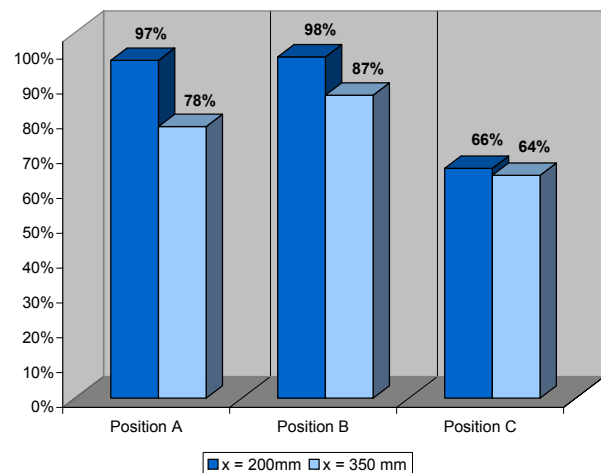
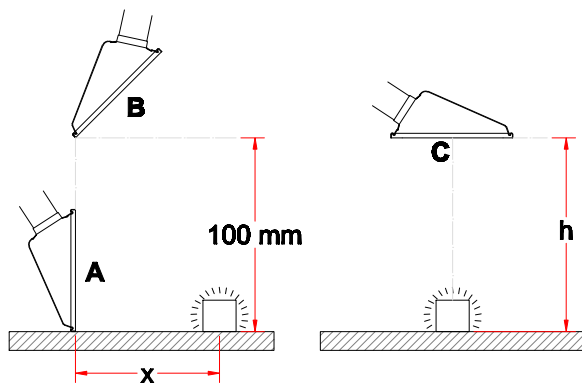


## System 50 - Aluminium (AL)

- Square hood recommended when extracting light and heavy fumes and gases
- Dimension of hood: 300 x 250 mm
- Increased stability when moving the hood due to reinforced rim of the hood
- Increased efficiency when placed vertically on a surface
- Hood made of transparent PETG, resistant to solvents
- Connection tube made of anodized aluminium - surface 10  $\mu$
- The transparent hood assists in keeping a good view of the work process
- Colours of flange available: white (-5), red (-4) or black (-050)



## Capture efficiency



## Drawing

